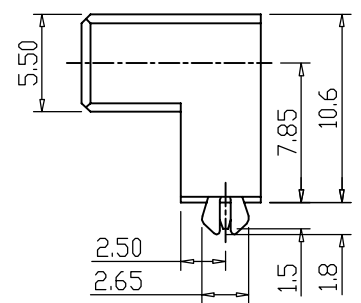
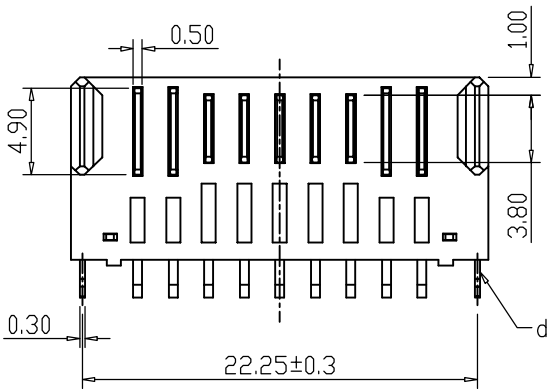
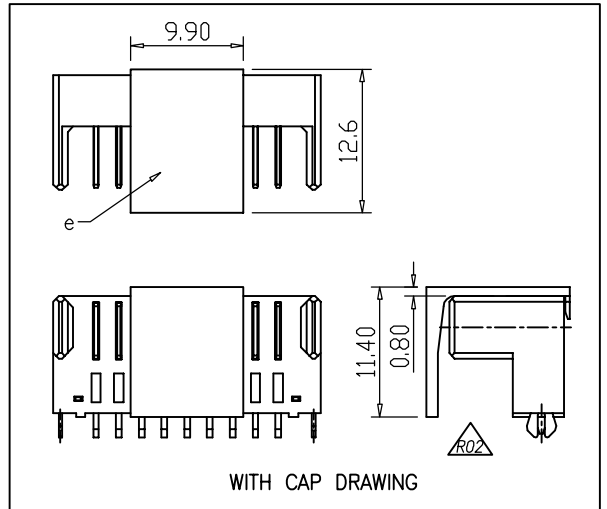
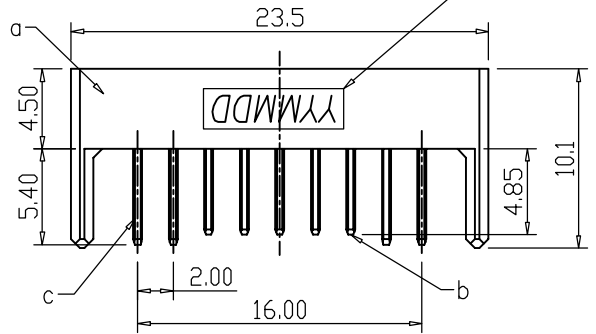


CATEGORY	DESCRIPTION	P/N #
CONNECTOR	2.0mm Pitch BATTERY 9PIN	BA09EM-DB4G1-0100

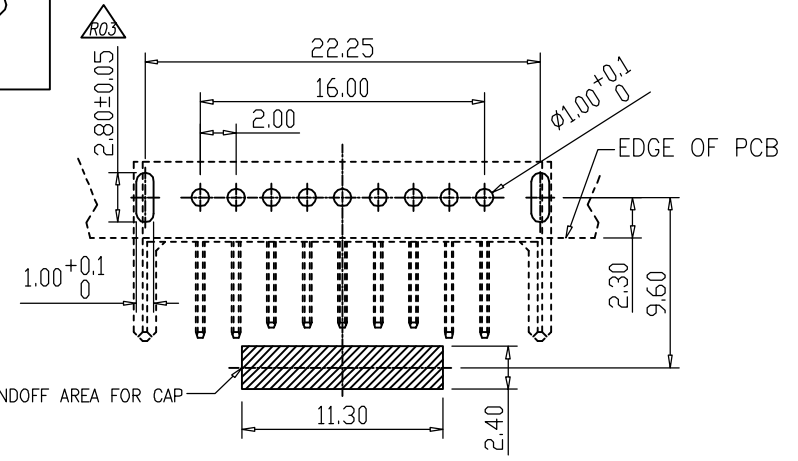
REV.	ECN NO	DESCRIPTION	REVISED	DATE
R02	—	修改CAP結構, 增加阻擋位	XSY	2011.03.04
R03	—	修改PCB Layout	XSY	2011.03.18
A01	—	修改電鍍規格, 由Bright Tin修改為Matte Tin	XSY	2011.03.25

Date Code
YY:YEAR(11~)
MM:MONTH(01~12)
DD:DAY(01~31)



SPECIFICATIONS

1. WITHSTANDING VOLTAGE: AC 500V MIN./1Minute
2. INSULATION RESISTANCE: 1000 MΩ
3. CONTACT RESISTANCE: 30 mΩ MAX.
4. VOLTAGE RATING: 50V DC
5. TEMPERATURE: -25°C TO +90°C.
6. SOLDER HEAT RESISTANCE: WAVE SOLDERING 260° 10sec.
7. GREEN PRODUCT IDENTIFICATION LABEL IN PACKING:



RECOMMEND PCB LAYOUT
PCB THICKNESS: 1.10mm.
PCB LAUOUT TOLERANCE: ±0.05mm.

Product Drawing					
ALEXTRONIC					
SCALE: 1/1		UNIT: mm		DWG. NO:	
SIZE: A4		PAGE: 10F1		REV: R01	
APPROVED BY		CHECKED BY		PREPARED BY	
JACKLIU		JACKLIU		XSY	
CUSTOMER COPY					

NO.	PART NAME	Q'TY	MATERIAL	PLATING & COLOR	Remark
e	CAP	1	LCP UL94V-0	Black	
d	Harpoon	2	BRASS T=0.3mm	120u" Matte Tin On Solider All Over 50u" Ni	
c	Long Contact	4	BRASS T=0.5mm	Gold Flash On Contact Area, 120u" Matte Tin On Solider, All Over 50u" Ni	
b	Short Contact	5	BRASS T=0.5mm	Gold Flash On Contact Area, 120u" Matte Tin On Solider, All Over 50u" Ni	
a	Housing	1	LCP UL94V-0	Black	

UNLESS OTHERWISE SPECIFIED TOLERANCES

DECIMALS: X :±0.5 X.X :±0.3 X.XX :±0.2

ANGLES: X :±2° X.X :±1°